



Pictured from left are Vice President Fair Wells, LTC Judith Jarvis and Regent Laura Ann Rau. Rau is presenting a certificate to Jarvis.

## DAR Hears Lighthouse Presentation

The John Everett Chapter DAR met March 3 at the home of Fair Wells in Eagle Lake. She was assisted in hostess duties by Anna Gertson and Helyn Farris.

Regent Laura Ann Rau conducted the business. Fifteen members were present to honor their guest, Retired LTC Judith Johnson Jarvis.

Judith moved to Eagle Lake in 1950 when her family became owners/operators of several Cole Theaters.

Having graduated from Eagle Lake High School and University of Texas, she then obtained a Masters in Nursing there also.

She had a 40 year career as Registered Nurse, Adult Nurse Practitioner and Clinical Nurse Specialist.

Judith was with the Department of Veterans Affairs Health Care system for 25 years, retiring in 2001. She retired in 2004 as US Army Nurse.

Her last 13 years of active duty were spent serving with the highly decorated 325th Field Hospital out of Independence, MO. Judith completed research assignments for Ft. Sam Houston, Evans Army Hospital in CO as well as multiple special assignments for the 4005th Hospital Augmentation Unit in Houston.

She developed and implemented the 325th immunization proactive program and became the first Infection Control Nurse there.

Her highest military education was graduating from Command and General Staff College at Ft Leavenworth, KA.

Judith returned home to Eagle Lake and "fell into" a new career that has become a passion.

She has been developing unique, structured study program at The Lighthouse for pre-teens and teens to help them learn to focus, to read above their grade level and to acquire many life skills.

She proudly drove her first college student to WCJC this past fall. She loves the kids and wants to show them that with work and dedication, they can achieve any goal they set.

The John Everett Chapter

honored Judith with a Humanitarian Award for her outstanding work.

The chapter urges Eagle Laker to stop by the Lighthouse to see their program and consider volunteering even one day a week. One of the biggest needs today is for more XP computers for students to study on.

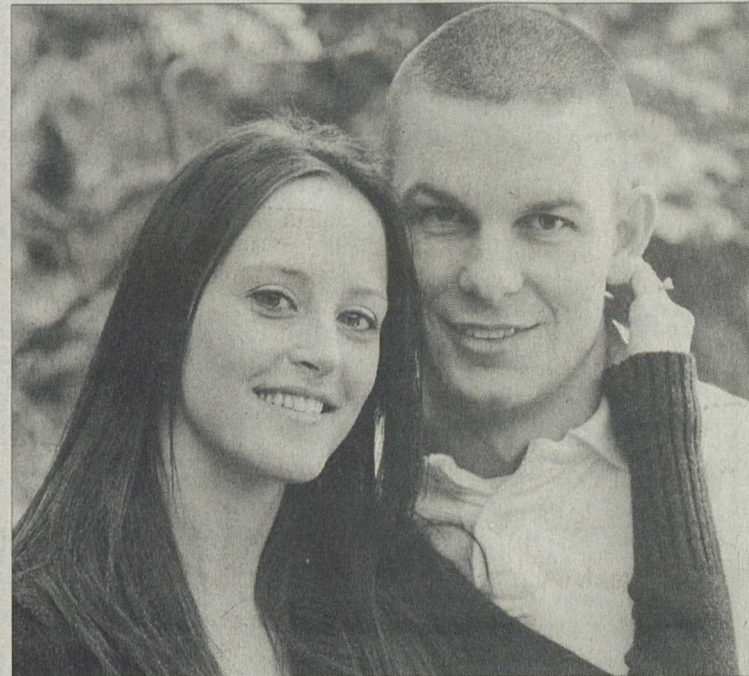
www.eaglelakeheadlight.com

## Subscribe Today! The Eagle Lake Headlight

Happy 14th Birthday "Chach" March 9



We Love You!!! From Aunt CoCo, Momo & Popo Cardenas, Momma, Ashley, E.J., Sarah, Stacy, Bully, James, Micah, & Donna



## Frank, Searle Announce Engagement

Paul and Marilyn Frank of Alpharetta, Georgia announce the engagement of their son, Ryan Lee DeBay Frank to Rebecca Lee Searle, daughter of Karen Searle and the late William Coleman Searle, Jr. of Roswell, Georgia.

The bride-elect graduated from Milton High School in 2001 and is currently employed as a preschool teacher and attending Kennesaw State University.

The future groom is a 2001 graduate of Milton High School and a 2006 graduate of Lanier Technical College with an Associate of Applied Science Degree in Criminal Justice. He is currently employed as a Police Officer with the Alpharetta Public Safety Department.

Ryan is the grandson of Mrs. Gladiola Vasina and the late A.J. Vasina of Lissie, Texas and the grandson of Norm and Marilyn DeBay of Sugar Land, Texas.

The couple will wed May 17, 2008 in Roswell, Georgia at the Roswell Presbyterian Church and will honeymoon on a seven day Caribbean cruise.



Rice Consolidated High School Senior, Eduardo Losoya, Jr. received the 2008 Go Texan Scholarship on Friday, February 29 at the Annual Houston Livestock Show and Rodeo Go Texan Banquet. Pictured at the banquet from left to right are: Marshall Smith, Vice President, Houston Livestock Show and Rodeo, Shara Fryer, Hostess and former Channel 13 News Anchorwoman, Eduardo Losoya, Jr., scholarship recipient, Lisa Krenek, Colorado County Go-Texan Ambassador and Skip Wagner, president, Houston Livestock Show and Rodeo.

## Compare Our CD Rates

Bank-issued, FDIC-insured to \$100,000		
1 year	3.50% APY*	Minimum deposit \$5000
3 year	3.80% APY*	Minimum deposit \$5000
5 year	4.15% APY*	Minimum deposit \$5000

\*Annual Percentage Yield (APY) - Interest cannot remain on deposit; periodic payout of interest is required. Early withdrawal is not permitted. Effective 3-3-08. Subject to availability and price change. The amount received from a sale of a CD at current market value may be less than the amount initially invested.

Call or stop by today. Gary Braun & Russell Braun 526 Spring Columbus, TX 78934 (979) 732-8266 or 1-800-752-8266 www.edwardjones.com Member SIPC

Edward Jones MAKING SENSE OF INVESTING

## Pharmacy & Your Health

### EAGLE LAKE DRUGSTORE

Steve K. Balas, RPh  
702 South McCarty • Eagle Lake • 234-2502  
\*Patient Counseling • We Accept Master Card, VISA, Discover & American Express  
\*Insurance Plans: Blue Cross, NPA, PCS, Pro-Serve, Sanus, PAID, Texas Medicaid  
24 Hour Emergency Phone: 234-3834

### Different Types of Drugs for Gout

Gout is characterized by sudden painful attacks in the joints, often occurring at night. This condition is a form of arthritis that is more likely to affect men than women. However the likelihood for women to be affected increases after menopause. Uric acid is a substance that is normally produced by the body, however may build up if over-produced, or if the kidneys do not excrete enough. High levels of uric acid in the blood lead to the formation of urate crystals. Accumulation of such crystals around the joint causes inflammation and intense pain, characterizing an attack of gout. The large joint of the big toe is usually affected. Other joints in the feet, ankles, knees, hands, and wrists also may become swollen and tender.

Medications available for the treatment of gout include *nonsteroidal anti-inflammatory drugs* (NSAIDs), *colchicine*, and *steroids*. NSAIDs are used to alleviate inflammation and pain associated with this condition. Ibuprofen (*Advil*, *Motrin*) and naproxen (*Aleve*) are examples of NSAIDs available in both over-the-counter and prescription strength. *Colchicine* may be prescribed for persons who are unable to take NSAIDs. *Steroids*, such as *prednisone*, also may alleviate inflammation and pain, and may be prescribed for persons who are unable to tolerate NSAIDs or colchicine.

**FOUR COUNTY Auction Center Inc.**  
INDUSTRY, TEXAS

**SPRING CATTLE SALE**  
SAT., MARCH 15, 2008 - SALE 10:00 A.M.

FOR MORE INFORMATION CALL DON DREYER  
979-357-2545 OR 979-830-3959  
www.fourcountylivestock.com

**PARTIAL LISTING OF CATTLE**

30HD TRUE F-1 PAIRS & HEAVY BRED	75HD CROSSBRED COWS PAIRS OR HEAVY BRED
16HD REG. ANGUS PAIRS OR BREDS	3HD HEREFORD COWS BRED
5HD BEEFMASTER PAIRS & HEAVY BREDS	2HD REG. BRANGUS COWS BRED
20 HD TIGERSTRIPE PAIRS	5HD BRAHMAN HEIFERS OPEN
25HD BRANGUS COWS & HEIFERS BRED	23HD BRANGORD HEIFERS OPEN
18HD BRANGUS PAIRS	6HD BRANGUS HEIFERS OPEN
23HD ANGUS COWS BRED TO BRAHMAN BULL	2 HD CHAROLAIS CROSS HEIFERS OPEN
8HD BRANGUS BALDY PAIRS OR HEAVY BRED	4HD F-1 BRAFORD X MAINEANGUS HEIFERS OPEN

**RANCH SELL OUT**

100 HD BRANGUS, ANGUS AND BLACK CROSS PAIRS OR BREDS BRED TO CHAROLAIS, HEREFORD & ANGUS BULLS	<b>PARTIAL LIST OF BULLS</b> CHAROLAIS, BRANGUS, ANGUS, BLACK SIMMENTAL, HORNED HEREFORD, CROSSBRED, BLACK, SIMBRAH, BRAHMAN
150+ HD CROSSBRED PAIRS OR BREDS. BRED TO CHAROLAIS, HEREFORD OR ANGUS BULL	

## Livestock Injection Class March 25

On Tuesday, March 25, at 5:30 p.m. at Columbus Livestock Company there will be an opportunity to join fellow producers in a hands-on demonstration on proper injection site techniques and effects that bad practices can have on a producer's "bottom line."

Best of all, this program is free.

It is requested that interested individuals RSVP by March 17 to the Texas AgriLife Extension Service of Colorado County at (979) 732-2082, so that an accurate meal count may be obtained.

Registration will start at 5:30 p.m., and the program will start at 6 p.m. at Columbus Livestock Company.

The program is being sponsored by the Texas Beef Council, Fort Dodge Animal Health, Texas AgriLife Extension Service, Proconn Animal Health Solutions, Texas & South Western Cattle Raisers Association and Bayer Animal Health.

**FINANCING AVAILABLE**

**Kawasaki**

**INVENTORY CLEARANCE EVENT**

**STOMPER KAWASAKI**  
The Largest Kawasaki Showroom in Texas 866-451-5875

I-10 Just minutes West of Katy (Exit 721) @ The Sealy Outlet Mall  
Mon - Fri 9am - 7pm • Sat 9am - 6pm  
www.stomperkawasaki.net

**Why Drive a Little Further?... LOWER PRICES, HUGE INVENTORY**  
We Service ALL Makes and Models - Quicker Turn Around Time! We Will Store Your Trailer.